



Head office

PMA/TOOLS AG

Siemensring 42
47877 Willich/Germany
Tel.: +49 2154 922230
Fax: +49 2154 922255
E-Mail: info@pma-tools.de
www.pma-tools.de

Subsidiaries

PMA/TOOLS FRANCE

Z.A.-214, rue de la Warnave
59850 Nieppe
Tel.: +33 320 970249
Fax: +33 320 326140
E-Mail: info@pma-tools.fr
www.pma-tools.fr

PMA/TOOLS ESPAÑA

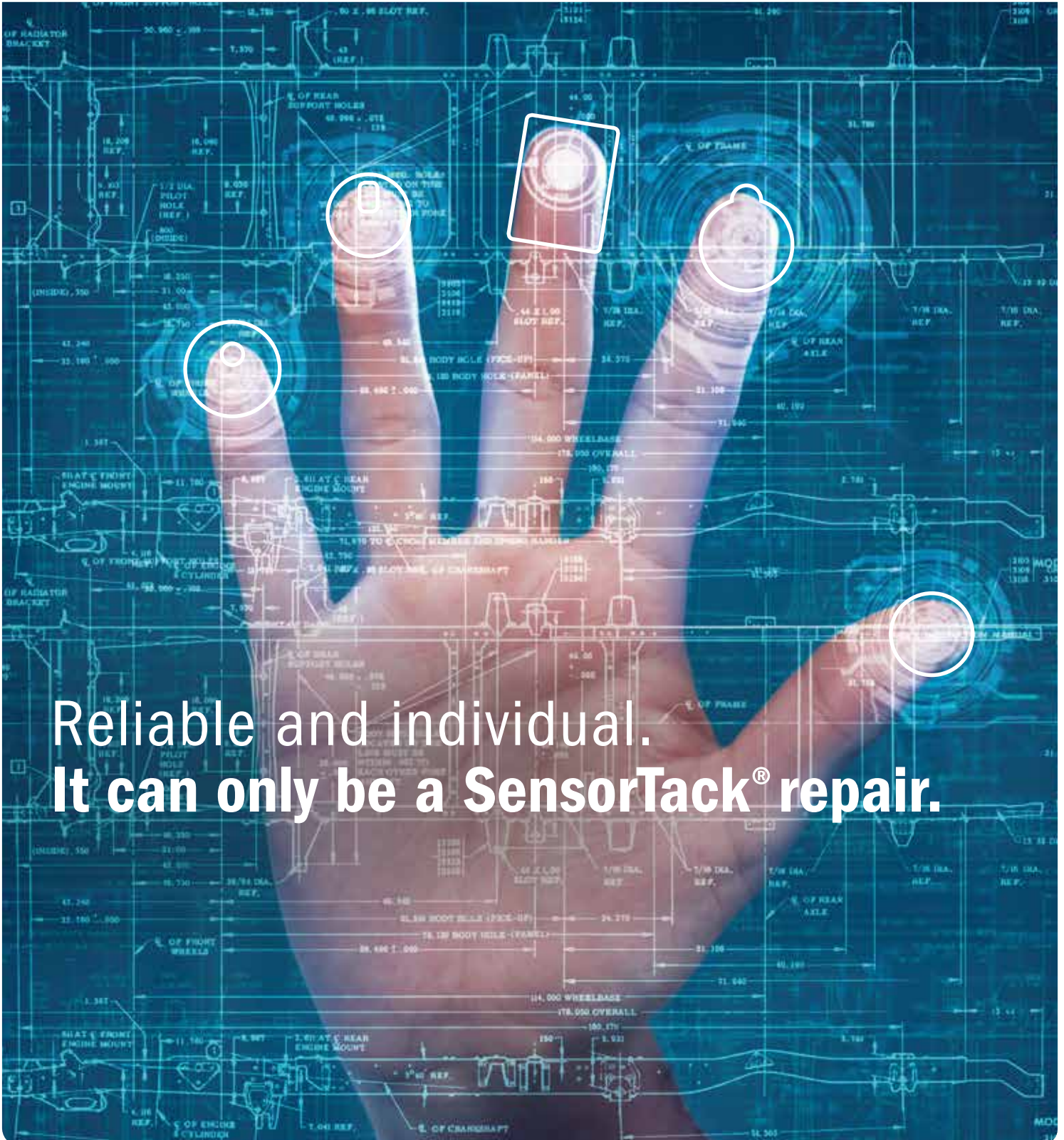
Sta. Margarida de Boada Vell 7-9
Pl. Riera de Caldes, Nave 12
08184 Palau-solità i
Plegamans (BCN)
Tel.: +34 93 8648517
Fax: +34 93 8640020
E-Mail: info@pma-tools.es
www.pma-tools.es

PMA
TOOLS



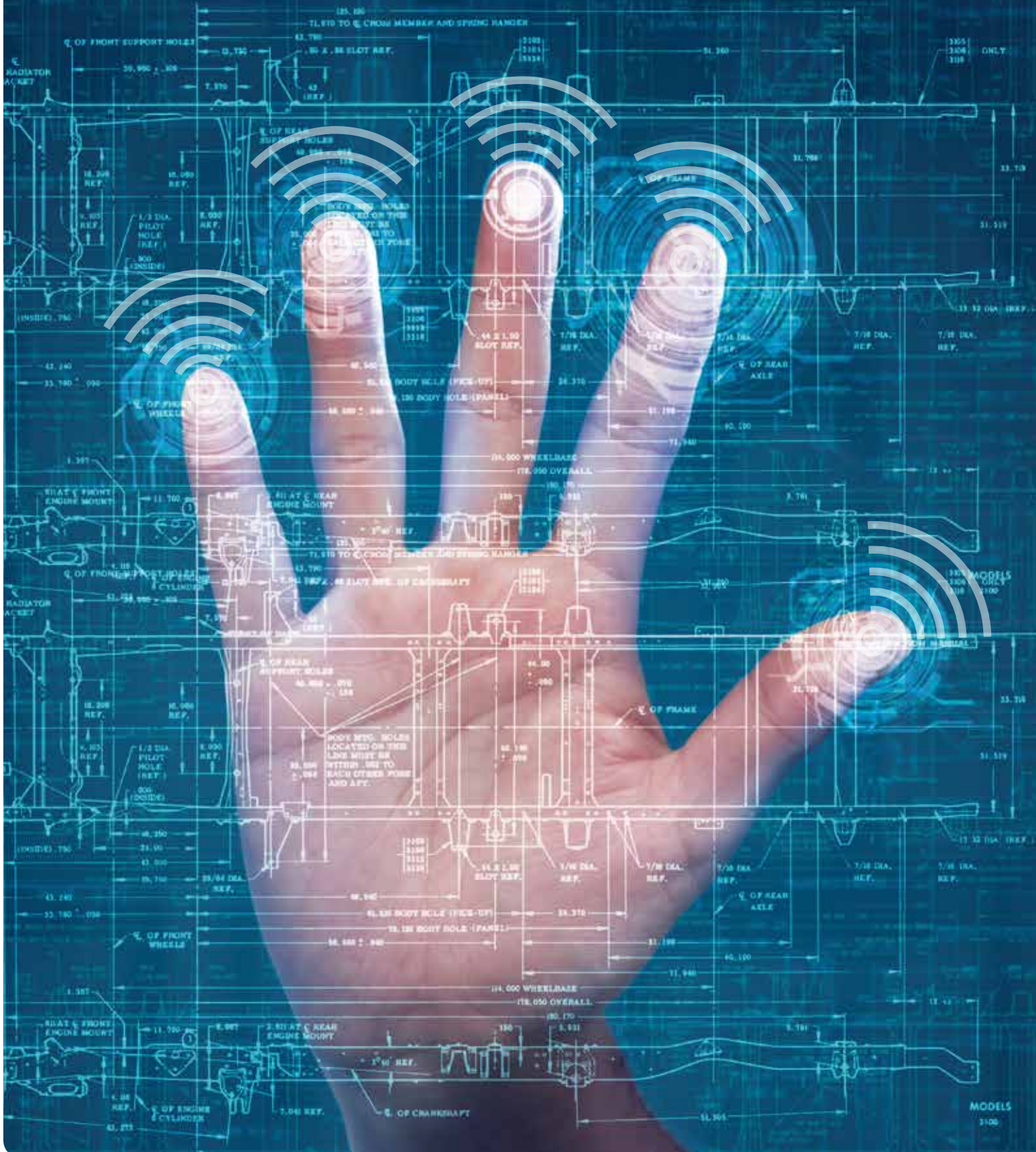
1 **2** Ready+ Ready+Plus

The no. 1 for sensor repair



Reliable and individual.
It can only be a SensorTack® repair.

Fivefold reliability: the original SensorTack® repair system.



Make the most of the fivefold reliability from SensorTack® when repairing camera-based driver assistance systems or when replacing and re-using rain and light sensors. As a leading provider of repair systems and a pioneer in smart-repair methods, SensorTack® from PMA/TOOLS represents the premium portfolio comprising special silicone gels and pads. Handling is quick and easy; the first-class processing properties ensure perfect results in verifiable quality corresponding to OEM with maximum functional reliability: It can only be a SensorTack® repair!



1 Reliable functionality: dependable in assembly and function.

Why SensorTack®? Reliable, easy assembly is one thing. The safety of fault-free functionality is another. SensorTack® ensures this functional reliability with translucent, transparent and durable products. The sensitive optical response corresponds to that of the original part, thereby contributing to road safety.



2 Reliable brand quality: OEM standard with SensorTack®.

As a unique product in verifiable quality for restoring permanent functionality of the connected driver assistance systems, SensorTack® is OEM certified – and tested by leading automotive manufacturers as well as the TÜV Rheinland (German Technical Inspectorate) and Fraunhofer Institute. SensorTack® 1 and SensorTack® 2 have TÜV certificates.



Functionality

www.tuv.com
ID 000028381



3 Reliable processes: in-house laboratory, integral tests.

All SensorTack® innovations are developed by our own specialists and engineers. To ensure user safety and consistency, all SensorTack® products undergo numerous tests in the PMA/TOOLS laboratory.



4 Reliable checks: PMA/TOOLS quality assurance.

All SensorTack® products are brand repair systems. They always fulfill the highest requirements for processing, handling and reliability – without variation in quality. Each of the four brand repair systems is subject to the PMA/TOOLS quality assurance before it leaves our company.



5 Reliable experience: 25 years of expertise in automotive glass.

Whoever knows more about automotive glass can offer more attractive solutions: As an international leading innovator of products associated with automotive glass, PMA/TOOLS has been able to build a comprehensive resource of up-to-date knowledge after almost 25 years. The result: intelligent and pioneering solutions like the four SensorTack® repair systems.

It can only be a SensorTack® repair: the comprehensive portfolio.

Whoever replaces automotive glass, they need reliable products in premium quality, because additional labour time can increase costs due to possible complaints or re-work. With its SensorTack® brand systems, the automotive glass specialist PMA/TOOLS offers internationally proven and OEM-certified solutions for rapid, consistently reliable and high-quality repairs.

The four SensorTack® brand repair systems

SensorTack® 1

The elastic, transparent 2-component silicone gel for round sensors

- > TÜV certified
- > Constant material properties between -40°C and +180°C
- > Minimum curing time, maximum form stability



SensorTack® 2

The translucent 2-component silicone gel for square-type sensors

- > TÜV certified
- > Especially developed for filling square-type rain/light sensors
- > Curing in just a few minutes, non-fading
- > Perfect adaptation to the sensor unit



SensorTack® Ready+

Ready-made silicone sensor pads for diverse rain/light sensors and camera systems

- > For immediate re-use
- > Transparent or translucent
- > Highly elastic, non-sticky, bubble-free
- > Insensitive surface



SensorTack® Ready+ Plus

Unique combination of SensorTack® Ready+ silicone sensor pads and SensorTack® 1 gel

- > For optical units with raised features
- > Quick replacement
- > Non-fading





It can only be a SensorTack® repair

SensorTack® is reliable

High-quality processing for optimum functional reliability

SensorTack® is cost-effective

No need to buy replacement sensors

SensorTack® is simple

The sensor does not have to be uncoupled from the electronics

SensorTack® is practical

There is no need to maintain stocks of sensors

SensorTack® is fast

Significantly shorter installation time

Further SensorTack® brand products

SensorTack® Release spray

Forms a thin film, which makes it easier to remove the sensor filled with SensorTack® 2 from the refill mould without causing damage.



SensorTack® Cleaning and contact spray

Ideal pre-cleaner and assembly support for the installation of sensor and camera units. Cleans the camera lens as well as the sensor and glass surface. Moistens the glass-facing side of all SensorTack® Ready+ pads and facilitates the installation. Quickly diffusing, without leaving any streaks or residues.



SensorTack® Heating box

The heating box shortens the curing of 2K silicone products (SensorTack® gel) in the cold season or at low workshop temperatures.



SensorTack® Ready+ box

SensorTack® Ready+ box, the basic equipment for professionally repairing most gel-based rain/light sensors.



SensorTack® makes it easy: with App and Microsite.

Finding the correct solution: Use the SensorTack® Microsite and App and learn in seconds which sensor repair system is suited for your particular application. In addition, much more helpful SensorTack® information is available: download the App to your smartphone and try it!

- So simple: direct sensor assignment per vehicle model or Eurocode
- So up-to-date: always the latest standard
- So quick: repair solution in seconds



The image shows a laptop and a smartphone. The laptop screen displays the SensorTack website with the following text:

Reliable and Individual.
It can only be a SensorTack® repair.
The no. 1 for sensor repair.

Fivefold reliability:
the original SensorTack® repair system

When it comes to repairing camera-based driver assistance systems or replacing rear-end light sensors, why not opt for the original?

As a leading innovator of automotive glass accessories products and with almost 20 years of experience, PMA/TOOLS is the only supplier offering an approved OEM certified premium products with laser-based repair systems. SensorTack® brand glass and pads for the risk-effective repair of rear and light sensors as well as camera systems. Developed in the PMA/TOOLS own laboratory, proven by PMA/TOOLS test procedures and approved by the PMA/TOOLS quality assurance.

- ➊ **Reliable functionality:** Residual inspection according to OE specifications
- ➋ **Reliable brand quality:** OEM standard quality
- ➌ **Reliable processes:** Our laboratory, our field

The smartphone displays the SensorTack app interface with the following text:

PMA TOOLS

SensorTack products Contact

Advice

Vehicle model:
BMW 3 Series GT F34 (246) 13-

Repair with:
SensorTack® 1

Art. No. 133601200

Or:
SensorTack® Ready™

Art. No. 133601166

I want to check another car

More information about SensorTack®
available at www.sensortack.com

– where the SensorTack® App can be downloaded as well.



SensorTack®

- > **4 systems**
for over
- > **40 manufacturers**
and more than
- > **500 models**

E.G. AUDI BMW CHEVROLET DAIMLER FIAT FORD GM HYUNDAI KIA
MAZDA NISSAN OPEL PORSCHE RENAULT SEAT TESLA TOYOTA VOLVO VW



Only in SensorTack®: the expertise of PMA/TOOLS.

The SensorTack® principle has been a success in over 100 countries, and with good reason:
As an established service and technology partner in the automotive glass replacement market, PMA/TOOLS is available as a globally successful, highly skilled specialist with the brand SensorTack®.

Under the heading “German Quality” and with branches in France, Spain and the USA, PMA/TOOLS can provide the complete range of automotive glass accessory expertise from a single source: from sensor technology to clips & fasteners, tools, assembly parts and universal profiles through to glass bonding. PMA/TOOLS is also the right partner when it comes to industrial applications: With sensor optics, tools, connectors, profiles and bracket systems.

In conjunction with customers, system partners, OEM and OES agents, industrial associations and insurance companies, PMA/TOOLS is continually expanding its automotive glass accessory expertise on a lasting basis.

This is supported by a customer-oriented service and sales network, highly efficient logistics as well as an approach that reflects users: With over 600 installation videos based on OEM data, we can provide total support for professional users.

